

**2.5**

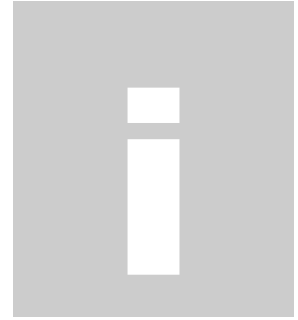
## **USB007 USB 2.0 FLASH DRIVE**

---

# **User's Guide & Manual**

# Index

<b>Introduction</b>	<b>1</b>
 <b>C H A P T E R 1</b>	
<b>Features &amp; Specifications</b>	<b>2</b>
 <b>C H A P T E R 2</b>	
<b>System requirements</b>	<b>4</b>
 <b>C H A P T E R 3</b>	
<b>Basic functions</b>	<b>5</b>
 <b>C H A P T E R 4</b>	
<b>Partition Type (Advanced Functions)</b>	<b>8</b>
 <b>C H A P T E R 5</b>	
<b>Advanced Functions Software operation</b>	<b>10</b>
 <b>C H A P T E R 6</b>	
<b>Troubleshooting</b>	<b>27</b>
 <b>A P P E N D D I X A .</b>	
<b>Driver Installation</b>	<b>29</b>



## Introduction

Congratulations on your purchase of this USB007 Flash Drive! The USB 2.0 Drive is a Hi-Speed USB 2.0 compliant device and is recommended that you plug it into a Hi-Speed USB 2.0 port. This USB 2.0 Memory is your friendly, secure, and lightweight removable mass storage device disk. It plugs thru the USB port so your computer will quickly detect and configure the disk without needing to restart the computer. Just the same way as you use a disk drive.

This USB 2.0 Drive is so light and compact that you can carry it with you anywhere. It comes in various large storage capacities starting at 32MByte up to 1GByte or more. It is so easy to install that you can actually use it to replace your floppy diskettes, ZIP drives, MO drives, and even CD-RW discs. And because it uses durable solid-state storage flash memory, it has no moving parts inside that makes it shock resistant and longer to use.

This USB 2.0 Drive even provides great flexibility and data security with disk partitioning and password security features. It allows you to easily create and configure one or two partition drives – an open partition drive with no password and a secured partition drive with password access option. The secured partition drive allows you to place your important files in it and protect it from being accessed by setting a password to lock the drive. Any access to this secured partition drive then would require first to enter the correct password to unlock the drive.



## Features & Specifications

### Features

- Support 32MB / 64MB / 128MB / 256MB / 512MB / 1GB ( K9W4G08 ) of Memory capacities
- provides write protect switch
- LED indicates USB Flash Drive in use
- Format it like floppy disk or hard drive

### Specification

- Compliant with USB 2.0 / 1.1 Specification
- Read Speed Range : 5000 ~ 7500 KB / Second ( K9F1G08 / K9K2G08 )
- Write Speed Range : 5000 ~ 7500 KB / Second ( K9F1G08 / K9K2G08 )
- Erase Cycles : 100, 000 times
- Data retention : 10 years

### Mechanical

- Length : 72.8 mm
- Width : 19.7 mm
- Height : 9.0 mm

### Certification

- CE
- FCC
- VCCI
- BSMI

### Environmental Operating Ranges

- Operation Temperature Range : 0°C ~ 55°C

### Power Consumption

- Idle Mode : 95 mA

- Read Mode : 130 mA
- Write Mode : 133 mA
- Standby Mode : 231  $\mu$ A

### **LED Indication**

- Light on : Connected and Working
- Flashing : Reading and Writing data

# 2

## System Requirements

There are minimum hardware and software requirements that must be satisfied to ensure the product to function properly.

**Computer Model** : IBM PC/AT Compatible, Power Macintosh, PowerBook, iMAC or iBook

**OS** : Windows 98 Second Edition, Windows Millennium Edition (Windows ME), Windows 2000, Windows XP, Linux 2.4 or higher, Mac OS 9.0 or higher

**Interface** : USB

**Free Hard Disk Space** : 3 MB above

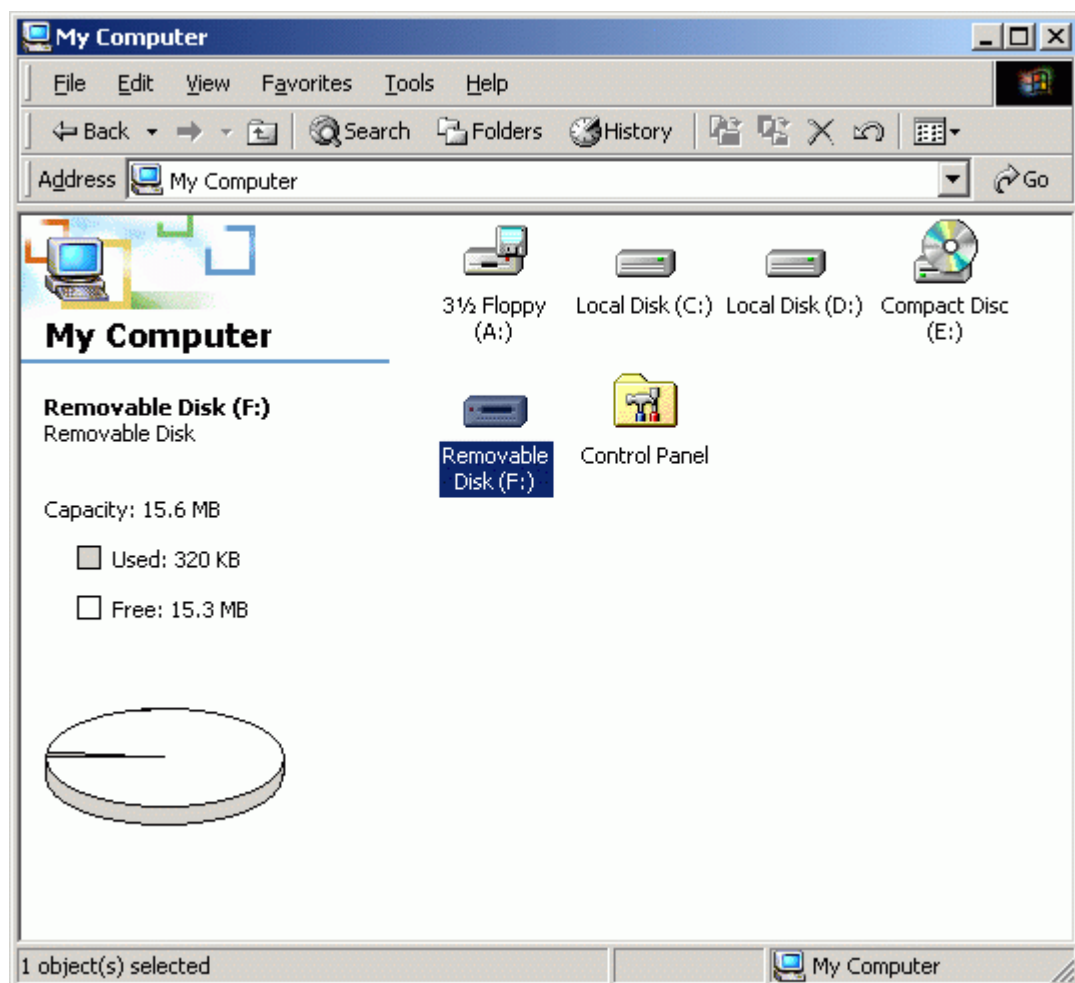
### Notes:

- Windows 98SE does not support a Mass Storage Driver by default. You must install the driver bundled with the product.
- The product uses the default driver in most cases. This will change once you run the application software bundled with the product. The "**U-Storage 2.5**" program installs the vendor's driver automatically, then the application software will work properly.
- The application software can only run with Microsoft Windows OS.
- However, the device basic function could be supported in all OS listed above.
- Make sure your USB host card supports USB2.0. If not, this device will only run on USB 1.0&1.1 specifications.

# 3

## Basic Functions

### 3.1. Plug and Play



When you plug the device into the USB port of your computer, you will see a "**Removable Disk**" icon in the file manager window.

In **Macintosh**, once you plug the device into the USB port. You will see the disk icon on the "Desktop".

In **Linux** OS, you can follow the following instruction to "mount" the device,

- Execute `cd /etc/sysconfig/ ( cat /etc/sysconfig/hwconf | more )`.
- Check the device information in `hwconf`, write down the mount point.
- Make a directory in `/mnt` (ex: `mkdir /mnt/usbHD` ).
- Then, execute `mount /dev/sda1 /mnt/usbHD` (if mount point was `.dev/sda`).

### 3.2. Read and Write

You can read, write, copy, and delete the files and data on the device the same way as the files and data on the hard disk.

### 3.3. Write-Protect Switch (Optional)

When you put the write-protect switch to the "🔒" position, you cannot write any files or data to the device. However, you can still view and read the files and data in the device. You can switch the "Write-Protect" switch even if the device is plugged in under Windows and Mac OS. But due to Linux OS limitation, the write protect switch will not work on-line.

### 3.4. Unplug

You can remove the device after you finish any action with the device. However, in Windows ME, Windows 2000 and Windows XP, please follow the safe removal procedure. You can find a safe removal icon in your computer's system tray.



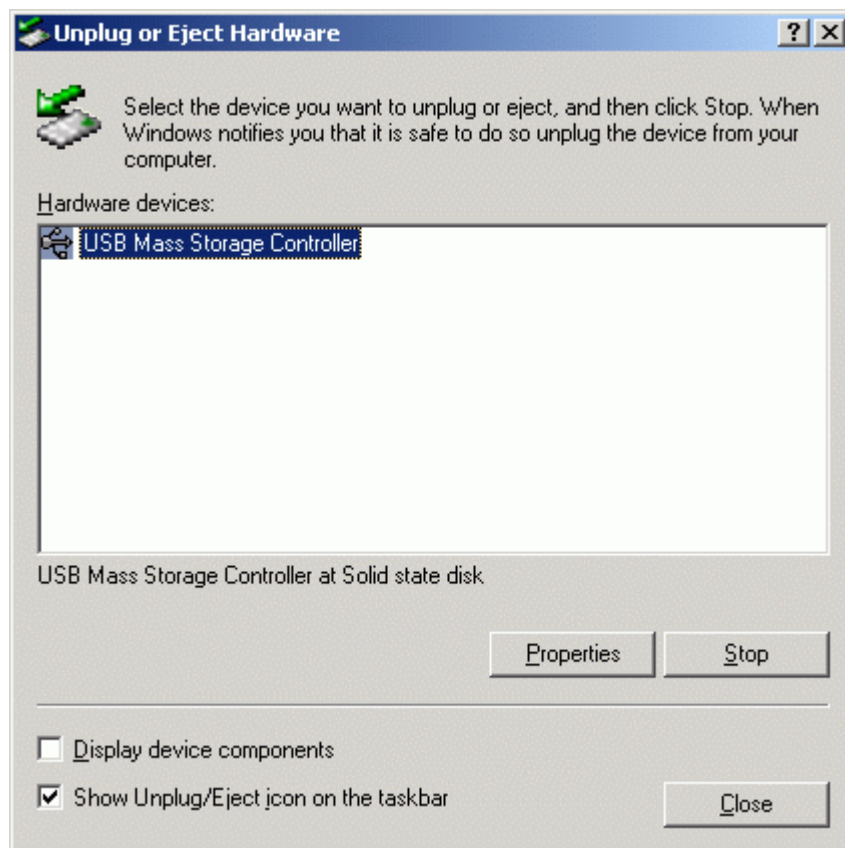
Double click the "safe removal" icon; the "Unplug or Eject Hardware" window will be pop up. You can select the device you want to remove. Then, click the "Stop" button. After that you can safely unplug the device from the USB port of your computer.



#### **Warning**

When you want to remove the device, please make sure the LED is not flashing quickly. If the LED is flashing quickly, that means there is some traffic between the OS and the device. Do not remove the device during this event. Otherwise, it may cause some damages to the data or files or possibly to the device.





### **Warning**

If you do not follow the safe removal procedure in Windows ME, Windows 2000 and Windows XP system, it may cause data lost due to the write cache issue.

In **Macintosh** machine, you can drag the "removable disk" icon and put into the trash. This action will perform the "Eject" function.

In **Linux** OS, please follow the "umount" command procedure to un-mount the device.

## Partition Type(Advanced Functions)

We can partition the device into three types of disk. We will use the following terminologies in this guide,

- **Public Area** There are no "Security" functions. You can perform basic functions, described in the "Basic Functions" section, in this area.
- **Security Area** This area cannot be viewed without the application software. Once you "Log In" using the application software, you will switch views from "Public Area" to "Security Area". After switching successfully, you can perform any basic functions, described in the "Basic Functions" section in this area.



You can only view the "Public Area" or "Security Area", in the same disk logic unit number (LUN), at a time.

In **U-Storage**, you can select the following partition combinations:

### 1. Single Public Area:

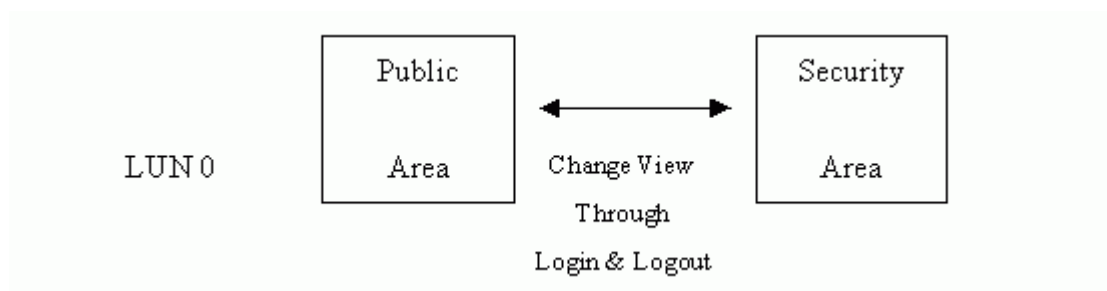
Make the entire device's area accessible to everybody.

### 2. Security Area:

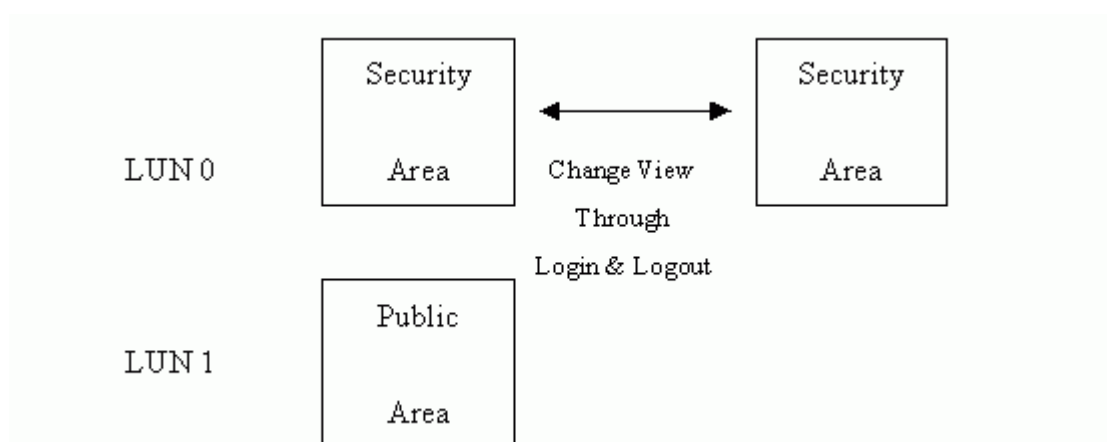
Divides the device area into two partitions in the same LUN, a Public Area and Security Area. The Public Area can be accessed by everybody who uses the drive. The Security Area can be accessed "Only" with a password.

### 3. Public Area Plus Security Area:

Divides the device area into three partitions in two LUNs, Public Area and Security Area in LUN0, and Public Area in LUN1. It has to use multiple LUNs driver to operate. The partition status was showed in the following figure. The partitions in LUN 0 will perform as described in the above item 2. The partition in LUN 1 will perform as described in the above item1.



This figure shows the detail operation of single LUN.



This figure shows the detail operation of multiple LUNs.

Type	Function	Security	Password	Disk Logical Unit Number	Disk Letters in OS
1. Public Area Only		No	No	1 (LUN0)	1
2. Security Area		Yes	Yes	1 (LUN0)	1
3. Public Area Plus Security Area		Yes	Yes	2 (LUN0 & LUN1)	2

This table shows the function description of the three partition types.

# 5

## Advanced Functions Software Operation

### 5.1. Installing/Uninstalling the Application Software

#### Installing the software:

If you are installing the application software onto Windows 2000 and Windows XP, you must first log on as the administrator and then install the application software.

#### Precaution about the USB Interface

- Please connect the device to the USB port of your computer when you install the application software.
- If you do not connect the device to the USB port and install the application software in Win XP OS, when you plug in the device you will have to install the device driver again.
- In Windows 98SE and Win Me, after installing the driver you need to unplug the device and plug it in again for the system to use the correct driver.

1. Find the "**U-StorageTools2.5.exe**" program. You can find the program on the Driver CD.
2. Double-click the "**U-StorageTools2.5.exe**" icon.
3. Follow the on-screen instructions to proceed.

#### Uninstalling the software:

To remove the installed software, you can click the windows [Start] menu and select [Setting], [Control Panel] and [Add/Remove Programs]. The application software can also be uninstalled by clicking the [Start] menu and selecting [Programs], [U-Storage], [Uninstall U-Storage].

#### Notes:

- The device driver will be required to install, as the device links the PC by the USB port at the first connection. After then, the driver installation is not required.

- Do not cancel the installation during the procedure. The device may not operate correctly if the installation is incomplete.
- Read the "Troubleshooting" Section if the installation cancels itself during the procedure, if the installation did not proceed as described, or if you feel that the driver are not properly installed.

### Installing the USB Flash Disk driver:

For some Windows systems, users should log on as the Administrator before installation.

Once you have attached the device to the computer. The OS will find the correct driver or the "Add New Hardware Wizard" dialog will appear after a moment. You can do the installation of the driver manually ([Refer Appendix A section](#)). Or just use the "U-Storage" program to do the driver installation.

During the installation procedure, if the "Digital Signature Not Found" message appears, just click the [Yes] button in the message window.

### 5.2. Using U-Storage2.5 Program the First Time



#### *Warning*

Because "U-Storage2.5" can only handle one device at the same time, you will not be able to use all the functions of "U-Storage", like "Resize", "Change Password", or "Log In", etc., you can insert more than two devices. If you want to use the functions of the program, please remove all other device. Otherwise, the "U-Storage" may not perform properly, or may even cause data loss.

After you install the software and driver correctly, the "U-Storage" icon will appear in the system tray automatically.

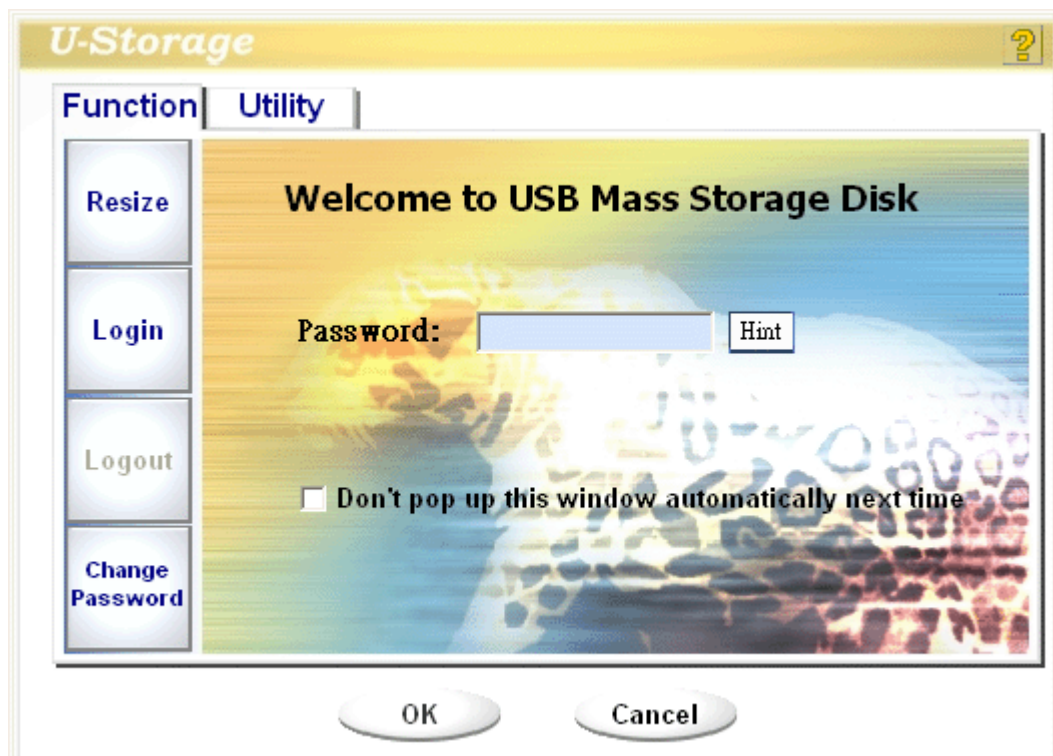


or



The display will depend on the status of the device.

1. You can use the right button of your mouse to pop up the selection menu as seen in the following figure. You can then select the function you want.
2. Or you can double click the icon in the system tray. The U-Storage manager window will open up as shown.



By default, the device is non-security. So, the "Resize" function will be active when you run this software first time.

### 5.3. U-Storage - Resize

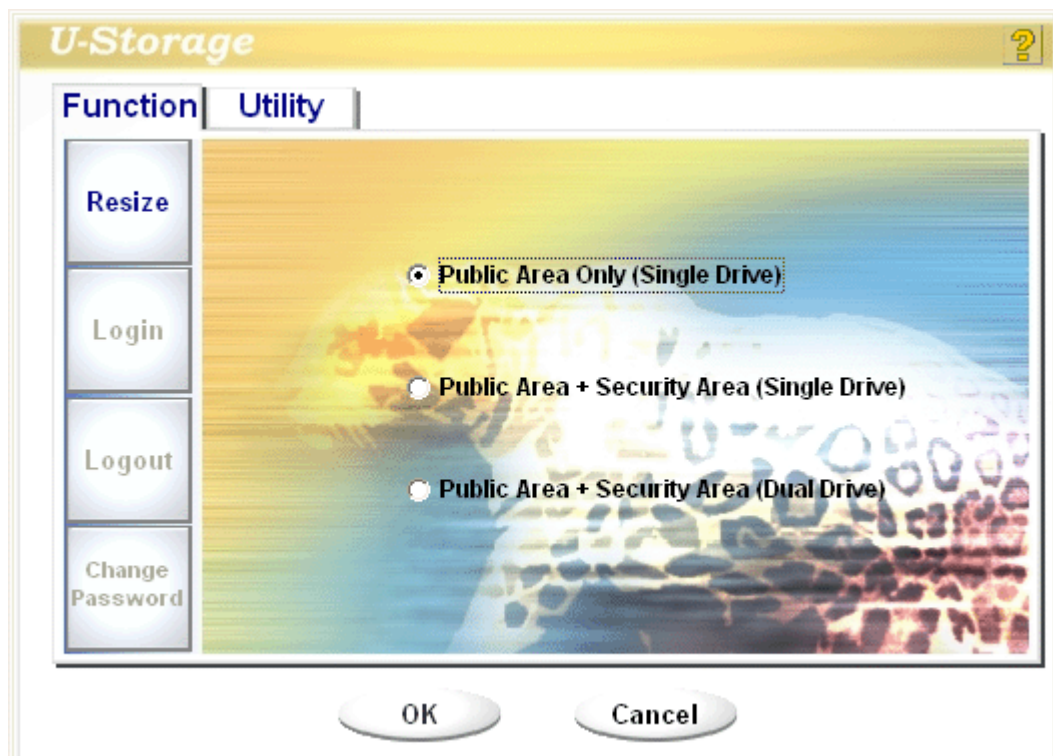
As described in the "Partition Type" section, you can "Resize" your device.



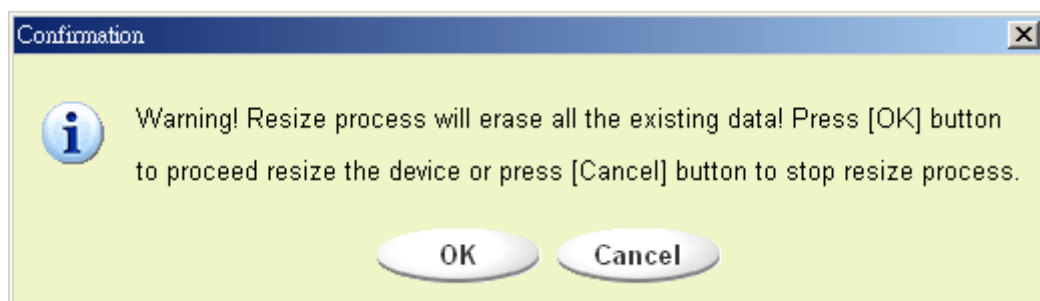
#### **Warning**

The "Resize" action will erase all the data or files existing on the device. The action is irreversible. You should backup all the important files or data. You should also close all of the active programs and windows open on your computer.

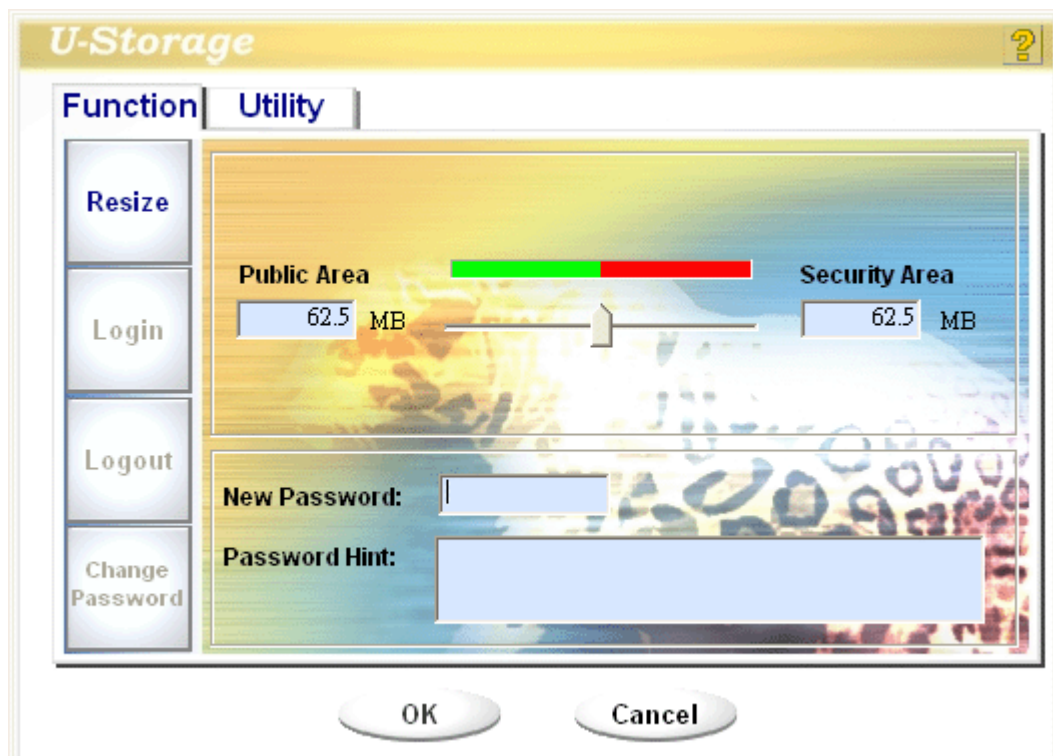
1. Click the Resize button in the U-Storage manager window. The following "Resize Partition" window will open.



2. Select the partition type you want.
3. If you select the "Public Area Only", then click the [OK] button. The "Confirmation" window will pop up. Please make sure you already backup all the important files or data.

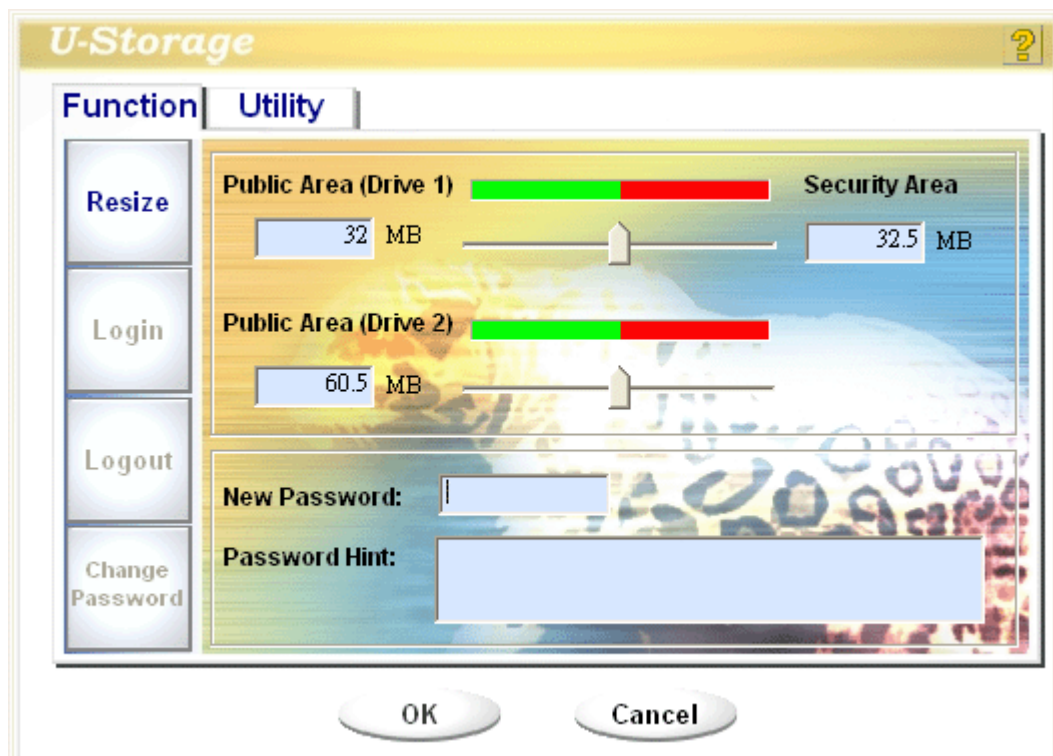


4. If you select the "Security Area", then the following "Security Area Resize" window will pop up. You can drag the scroll bar in the middle of the window to set the size of the "Public Area" and "Security Area". Or you can type in the size of each Zone you want in the "Size" window. You can set the password for accessing the security area in the "New Password" window. The maximum size of the password is 8 characters. You can key in the hint of your new password in the "Password Hint" window. This hint will be displayed when you click the "Hint" button in the "Unlock Protect" window. The maximum size of the Hint is 32 characters. After you finished with the settings, click the [OK] button. The "Confirmation" window will open. Please make sure you already backup all the important files or data.

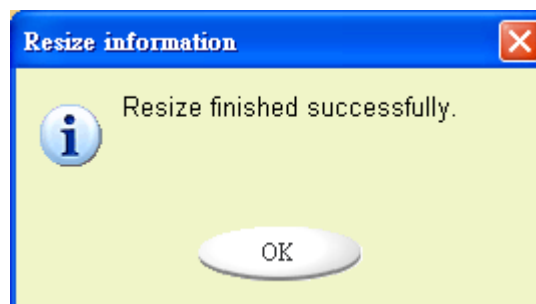


5. If you select the "Public Area + Security Area", then the following "Public/Security Area Resize" window will pop up. You can drag the scroll bar in the window to set the size of each area. First, please set the size of the "Public Area" of LUN1. The minimum size for each area is 1MB. The maximum size of the "Public Area" of LUN1 is 1/4 of the total size. Once the size of the "Public Area" of LUN1 is set, the scroll bar of the "Public Area" and "Security Data Zone" of LUN0 will be set in the middle automatically. You can also type in the size of each Zone you want in the "Size" window. You can set the password for accessing the security area in the "New Password" window. The maximum size of the password is 8 characters. You can key in the hint of your new password in the "Password Hint" window. This hint will be displayed when you click the "Hint" button in the "Unlock Protect" window. The maximum size of the Hint is 32 characters. After you finished the setting, click the [OK] button. The "Confirmation" window will open. Please make sure you already backup all the important files or data.





6. Once the resize is finished, the following message will open.

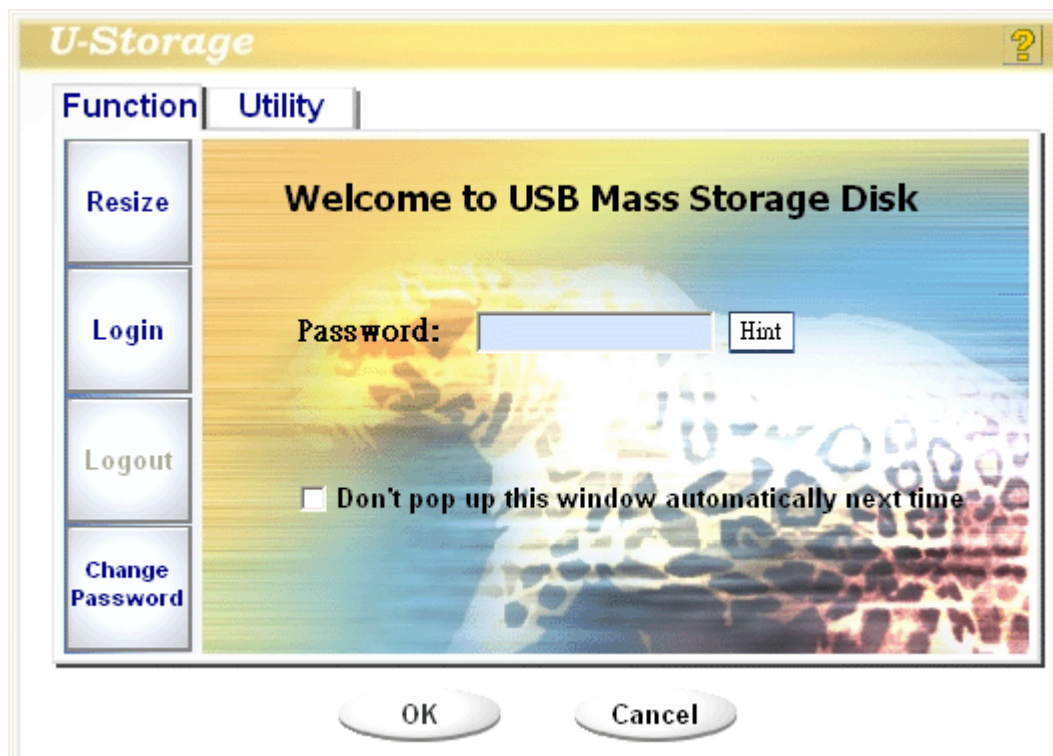


7. After you finished "Resize", the "Setup.exe" program will be copied into the "Public Area" (in LUN 0) automatically. It is removable, however, it is needed when you insert your device into another computer. It will install the U-Storage software for you on the new computer.

#### 5.4. Login the Security Area

If you partition the device with security, you can execute the following "Login" function to access the security Area.

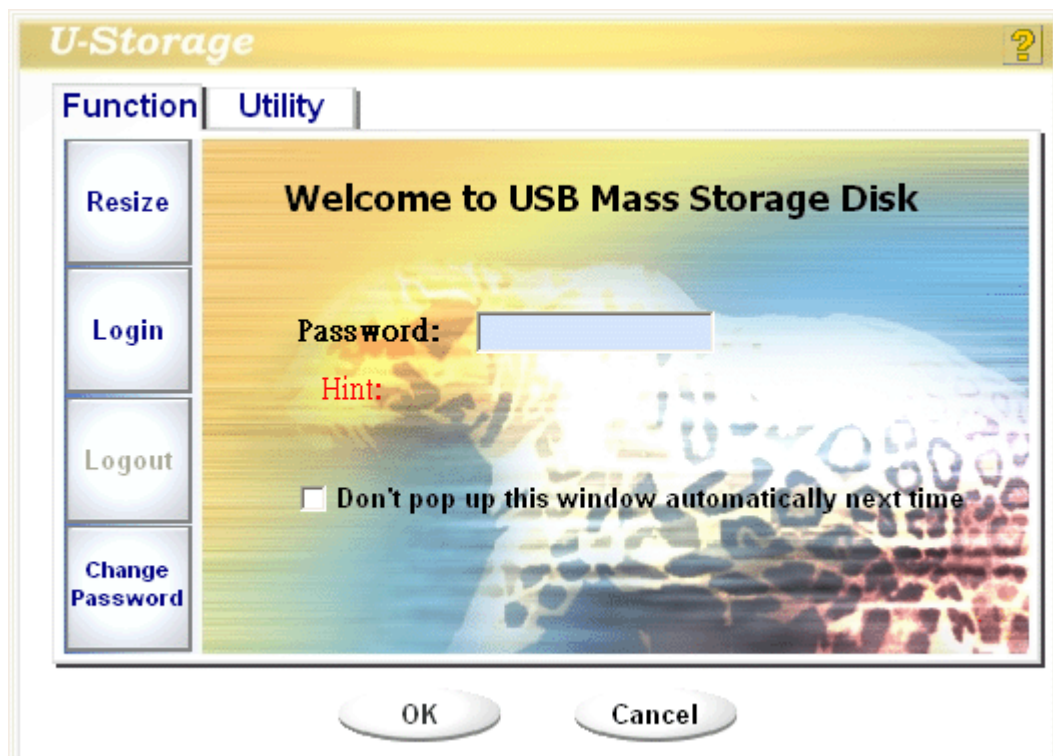
1. Double click the "U-Storage" icon in the system tray or click the [Login] button in the U-Storage manager window. The "Unlock Protect" window will open.



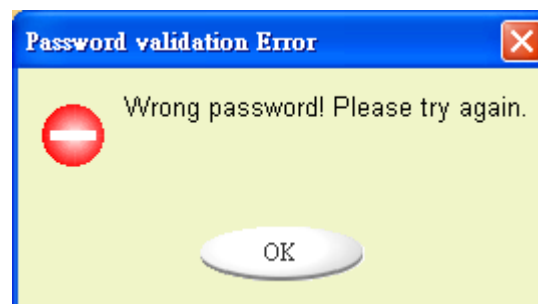
### **Warning**

When you perform the login and logout action with the device, please make sure there is no application or programs running or any documents open connection on the device. If so, it will cause data lose or damage.

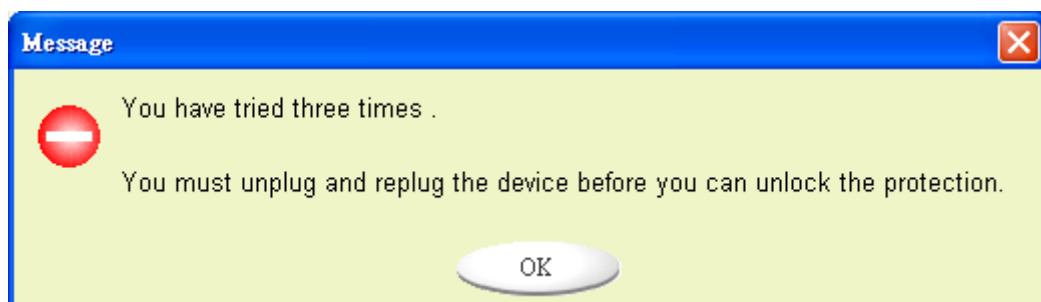
2. Key in the password in the "Password" area.
  - You can create the password hint using the "Resize" or "Change Password" functions. Once you have created the password hint, you can click on the "Hint" button in the "Unlock Protect" window to help prevent you from forgetting the password. The Hint will be displayed for three seconds.



- If you key in the wrong password, the following message will be shown.

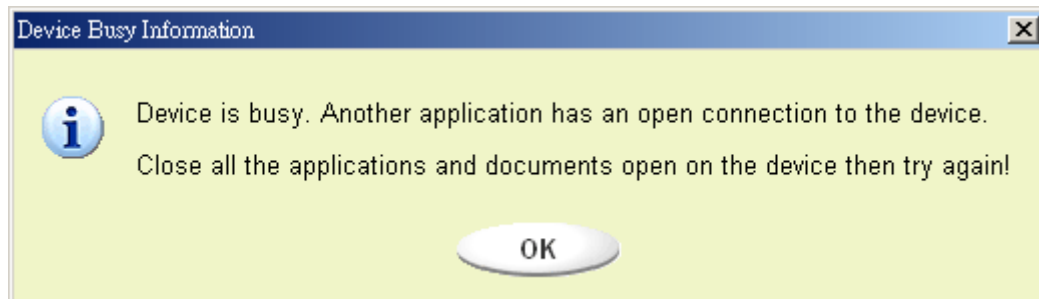


- You had three attempts to input the password. After third try, the following message will pop up. And you have to unplug and plug the device in order to do future actions.

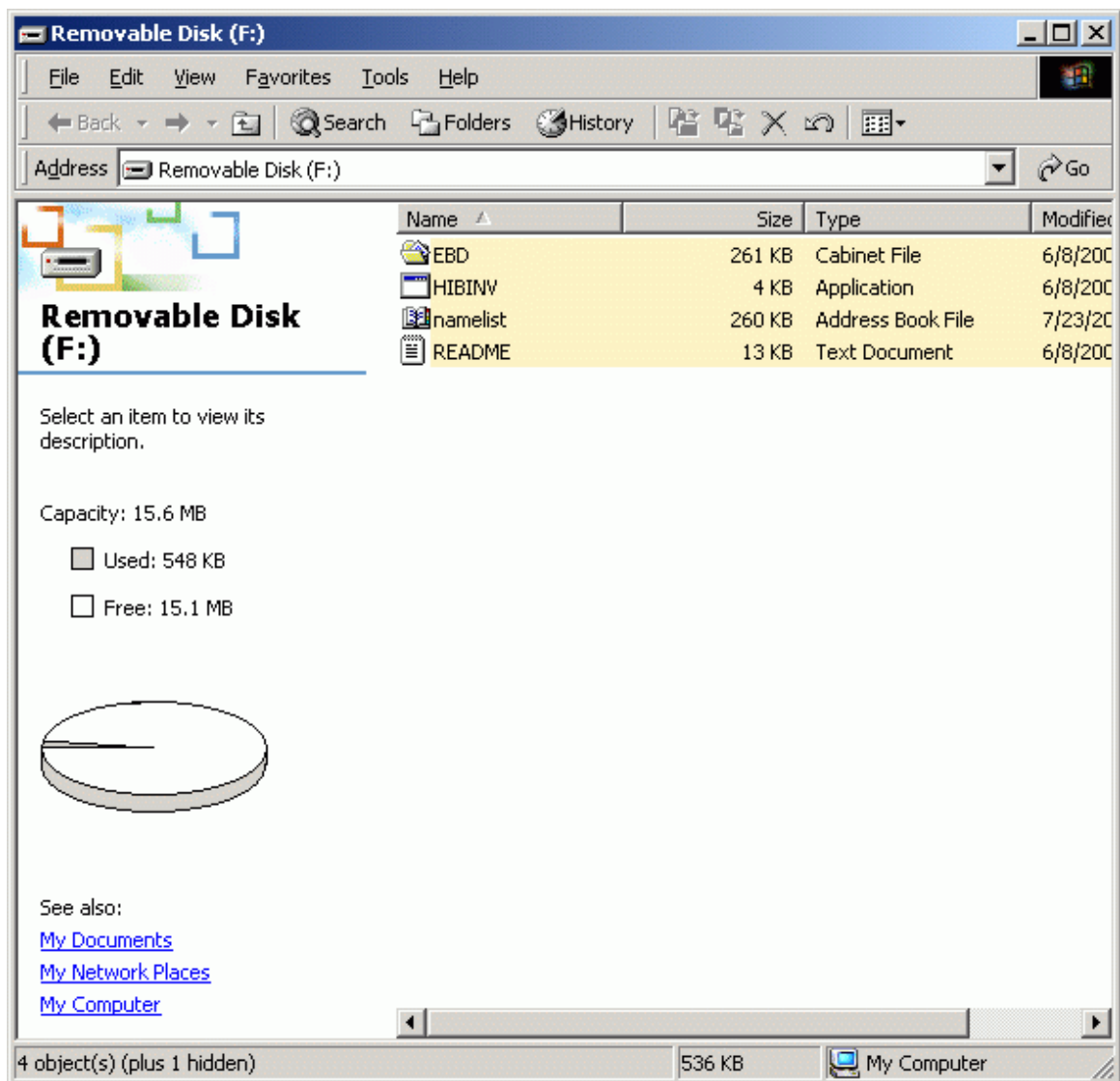


- When you use the login or logout action, please make sure you close all the programs or documents open connected to the device. If there is an application open, a program is running, or document open connected to the device, the

following message will appear. In Win2000, even if the "file manager" has accessed the device, it will be treated as "busy". You have to close the file manager in order to "Login". However, not all the connection could be checked in all kind of OS.



3. Click on the "OK" button.
4. Once the file manager window that contains the "Security Area" has opened, you can perform the operation you want in the Security Area. The file manager window will look like the following figure. The background is colorful.



## 5.5. Logout the Security Data Zone

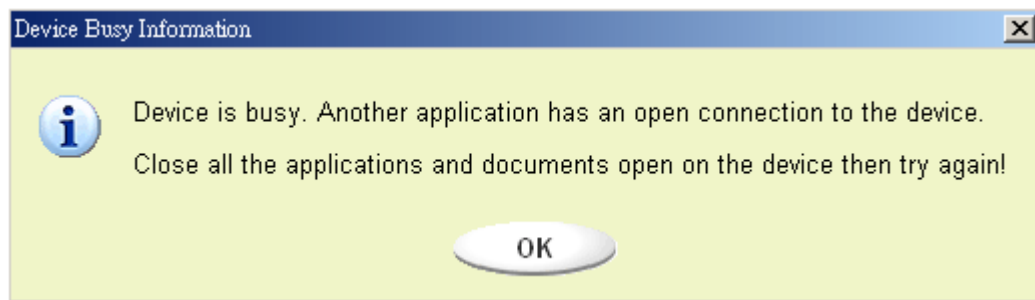
1. Double click the "U-Storage" icon in the notification window or select the [Logout] button in the U-Storage manager window.



### **Warning**

When you perform a login and logout action with the device make sure there are no applications or programs running, or documents open connected to the device. If so, it will cause data lose or damage.

- When you perform a login or logout action, please make sure you close all the programs or documents open connected to the device. If there are applications running or documents open connected to the device, the following message will appear. In Win2000, even if the "file manager" has accessed the device it will be treated as "busy". You have to close the file manager in order to "Login" However, not all the connection could be checked in all kind of OS.

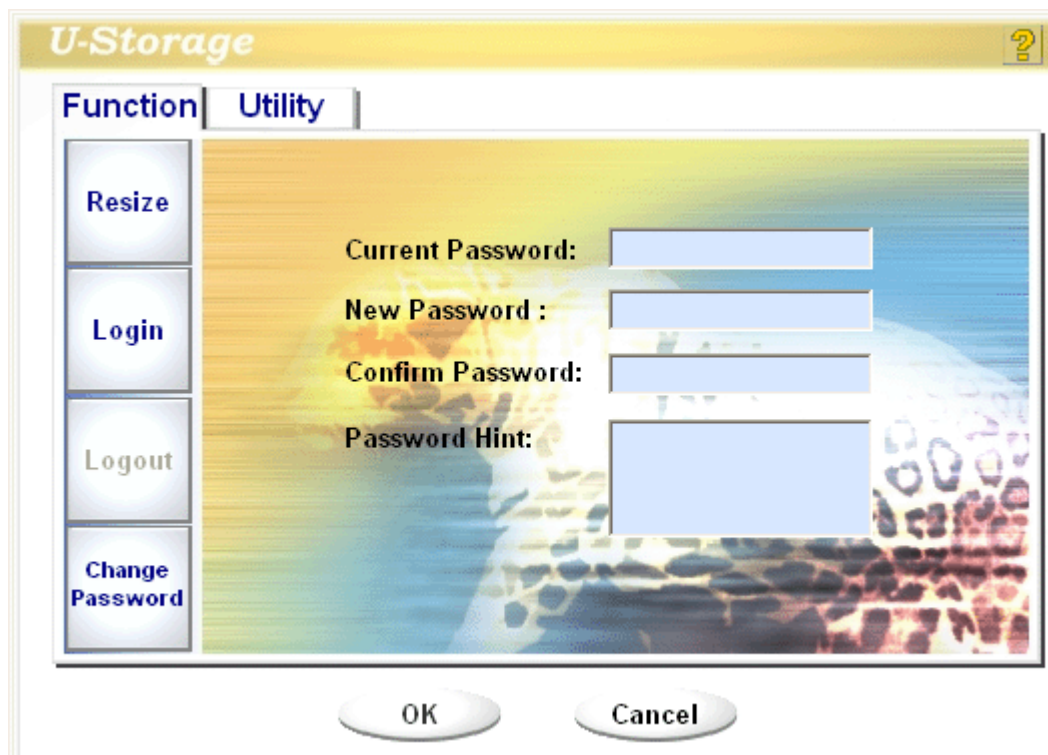


2. Once the file manager window that contains the "Public Area" has opened, you can perform the operation you want in the Public Area.

## 5.6. Change Password

User can change password and key in the password hint using the "Change Password" selection in the U-Storage menu. You can only select this item in the "Security AP Zone".

1. Click the U-Storage menu in the notification window using the right button of your mouse and select the [Change Password] selection of the U-Storage menu. The following "Change Password" window will appear.



2. Make sure the "Write Protect" switch is at the "OFF" position.
3. Key in your current password in the "Current Password" area.
4. Then, key in your new password and confirm in the "Confirm Password" area.
  - The maximum size of the password is 8 characters.

5. You can key in a hint of your new password in the "Password Hint" window. This hint will be displayed when you click the "Hint" button in the "Unlock Protect" window.

## 5.7. Boot-Up Function

The Boot-Up program in "Utility" manager window will build up the device as a bootable disk. Before you run the program, please prepare the following,

1. This program can run under Windows 98 SE, ME, and XP. (The program can't be supported in Windows 2000.)
2. Please disable any running anti-virus program before doing the procedure.
3. Make sure your Windows system folder is located in the C Disk.
4. Make sure the "write-protect" switch is in the "OFF" position.
5. This program only deals with one device at the same time.
6. Make sure your U-Storage is in "Public Area" if it is using the "Security" function.
7. If you want to make your device as a bootable USB HDD, you can't make the device as a "Security" one. This option is only supported in Windows 98 SE.



### *Warning*

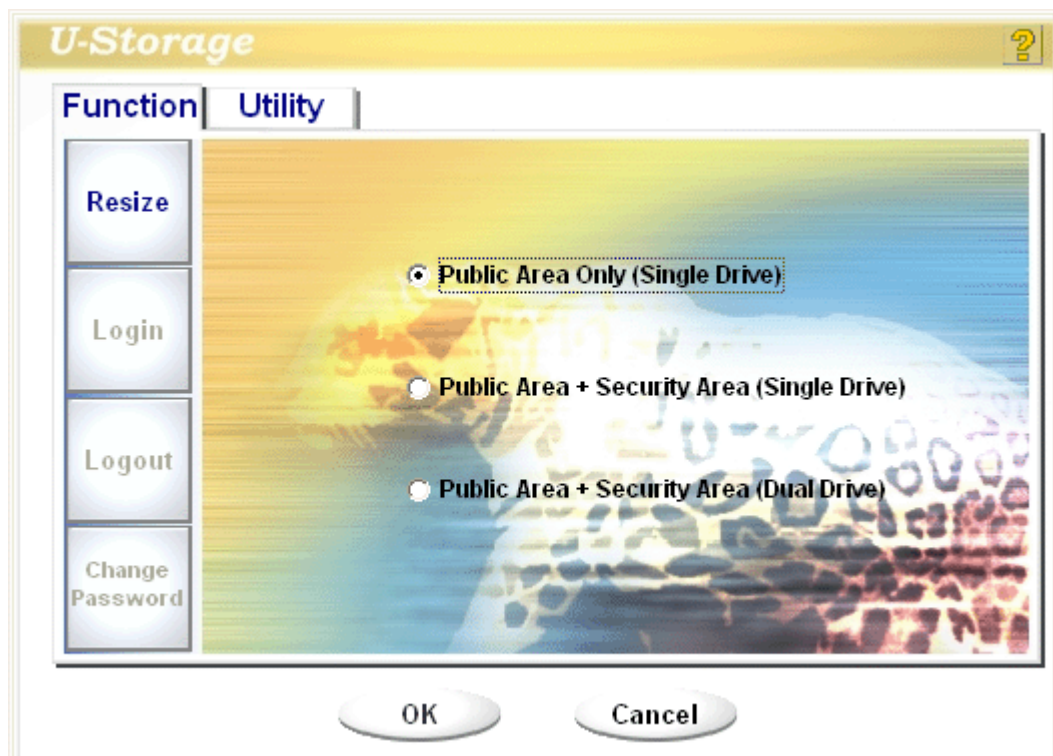
If you perform the "Log In" action with your U-Storage located in the "Security Area" and run the Boot-Up function, it will do the "Log Out" and erase all the data in "Public Area".

When you are ready to proceed, follow the following steps, please note that the procedures for Windows XP are different from Windows 98 and ME. This program cannot be run in Windows 2000.

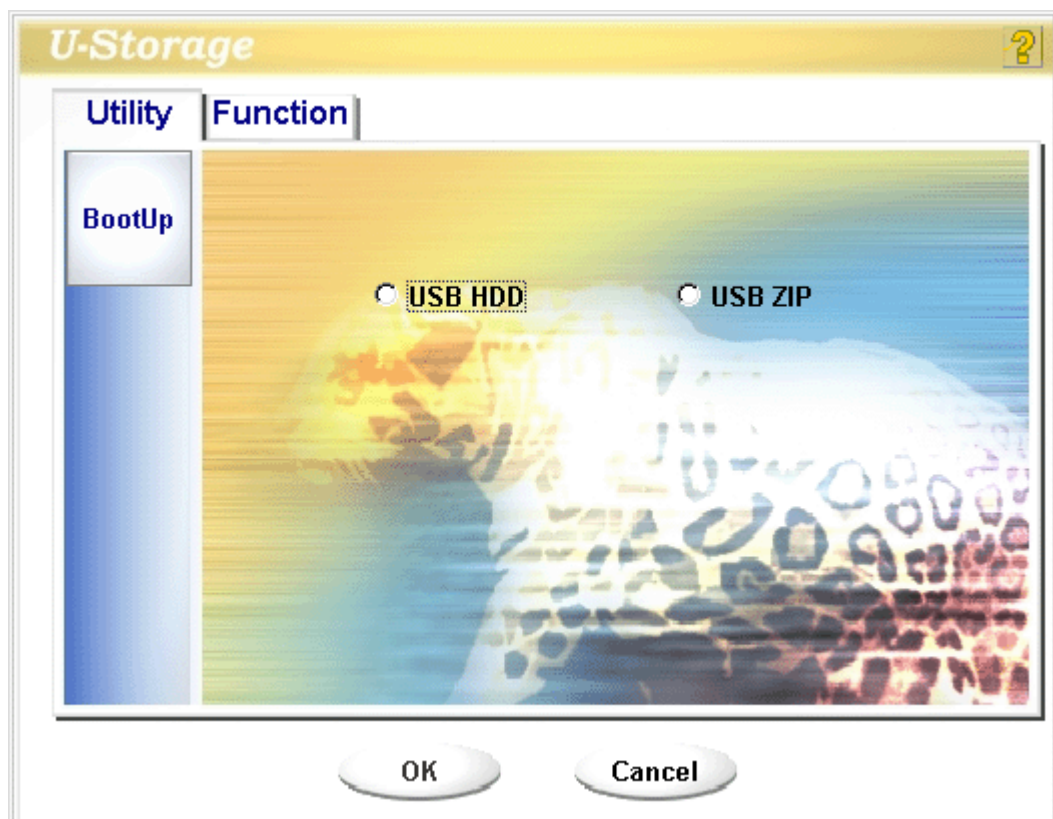
### **Windows 98 SE and Windows ME:**

1. You can click the [Utility] button in the U-Storage manager window to execute the Boot-Up utility.






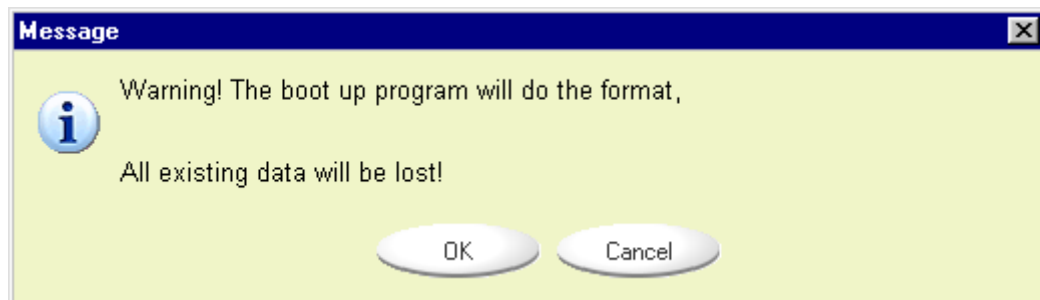
2. The following window will be shown.



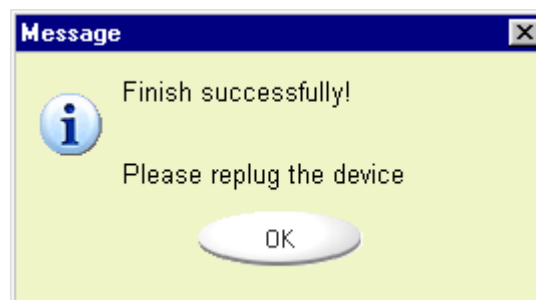


3. You can select the type of the boot up method, USB ZIP or USB HDD. The USB HDD is only for Windows 98.
  - If you select "USB HDD", the computer will display the `C:\>` prompt after you boot from the device.
  - If you select "USB ZIP", the computer will display the `A:\>` prompt after you boot from the device.
  - If your device is using the "Security" function, only USB ZIP can be selected.
4. After the selection, please click on the "OK" button. The following warning message will appear. The data in the "Public Area" will be lost. If this is OK then click on the "OK" button to continue the process.

 **Warning** The program will do the format. The existing data in the "Public Area" will be lost.



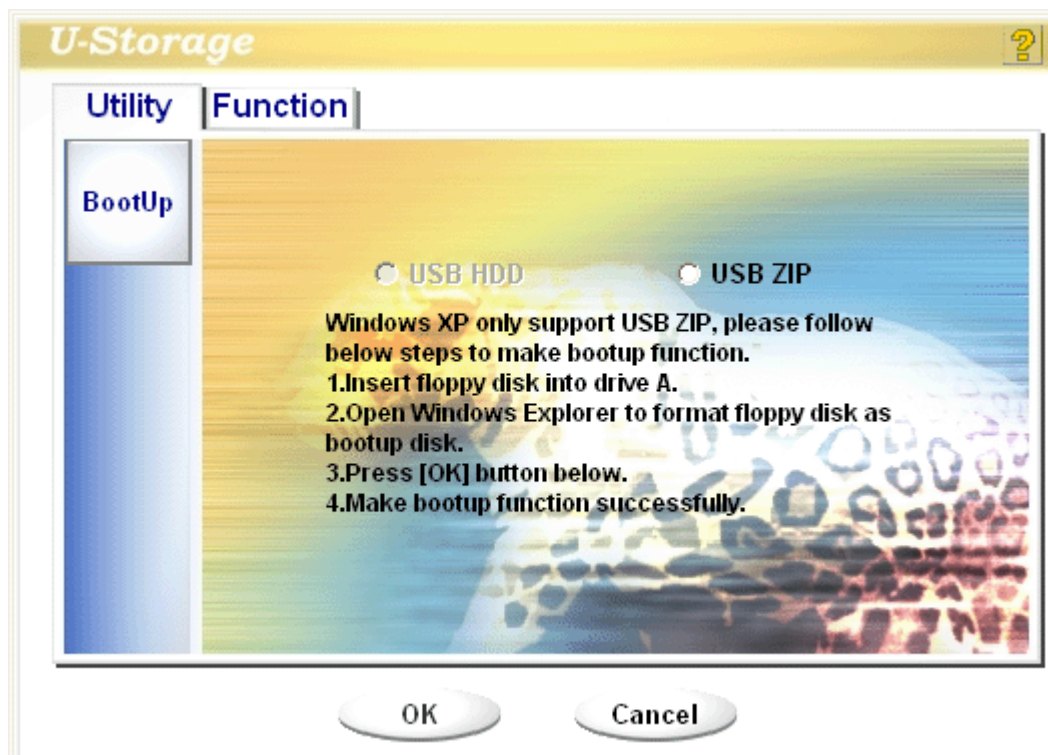
5. After the process is completed done, the finish message will be shown.



### Windows XP:

1. Please make a bootable floppy first. Insert a disk into the floppy drive. Then right click on the 3.5" floppy icon in the "My Computer" window. Select "Format" then left click.
2. Tick the "Create an MS-DOS startup disk" option to create a bootable floppy under format options. Then, click on the "Start" button.
3. Create a directory called XP\_Bootable in the root directory of your computer's system disk.

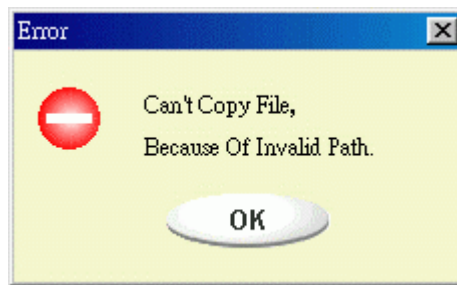
4. Go to "Start" menu, click "Settings", "Control Panel", enter "Folder Options". Select "View" tag, select "Show hidden files and folders" item under "hidden files and folders directory" and cancel the item "Hide protected operating system files (Recommended)".
5. Copy all the files in the floppy to the XP\_Bootable directory. There should be total 15 files copied in this procedure.
6. Click on the [Utility] button in the U-Storage manager window. Then, select the USB ZIP. Click on the "OK" button.



7. After the process is done, the finish message will be displayed.



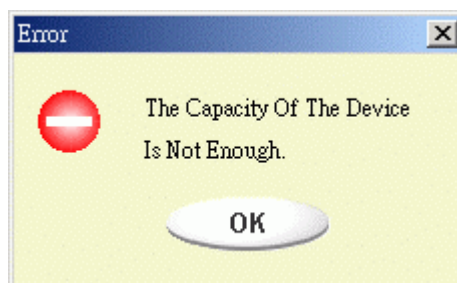
## 5.8. Error Messages:



When this message appears, the possible cause is your Windows OS installation is not completed. (Please make sure the path \WINDOWS\COMMAND\EBD in Windows 98SE, \WINDOWS\COMMAND\EBD in Windows ME, or \XP\_Bootable in Windows XP exists)



When this message appears, please make sure the "Write-Protect" switch is in the "OFF" position.



When this message appears, please make sure the capacity of the "Public Area" is large enough.

### Notes:

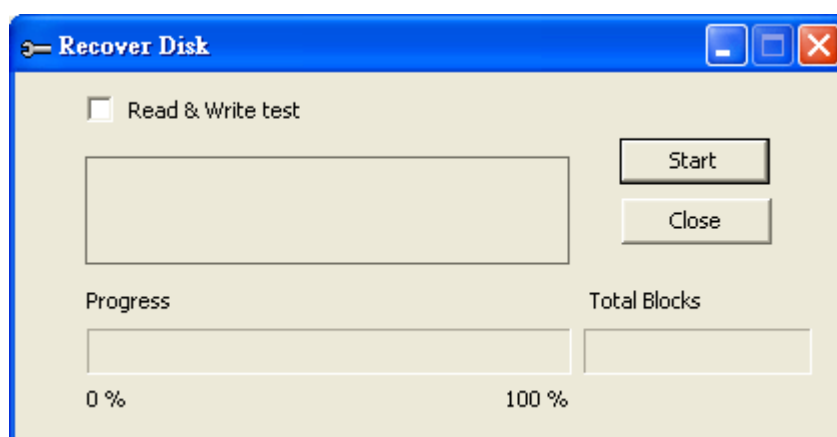
1. After you finish the program, you will see different disk properties when you select different disk types. For example, if you select it as "USB HDD", you will see the hard disk icon in the file manager window. If you select it as "USB ZIP", you will see the removable disk icon in the file manager window. However, only Windows 2000 and above can identify the difference. In Windows 98, you will just see the "Removable Disk" icon.
2. After you finish the program, the device contains the files necessary for boot up function. Please don't remove any files from this area, Otherwise it will cause failure when you perform a boot up of your computer.

3. When you want to use the U-Storage to boot up your computer, please select the appropriate setting of the BIOS. Please refer to the user manual for your motherboard.
4. Because to the BIOS design of each motherboard is quite different; we cannot guarantee the boot up device will work for every computer.
5. Award has changed their BIOS spec. since March, 2002, and the boot up procedure is now different. We cannot identify if the BIOS is new or old. So, this boot up utility is not suitable for Award's new BIOS if you use USB ZIP boot up option

## 5.9. Recover Disk:

Once your device is damaged, you can use this utility to recover the device. It will check if there are too many bad blocks in device and try to repair it.

1. After you double click on the Recover Disk shortcut in start menu, the following window will pop up.



### **Warning**

The "Recover Disk" action will erase all the data or files existing in U-Storage. The action is irreversible. You have to backup all the important files or data.

2. There are two steps in Recover Disk, one is scan bad block and the other is "Read/Write" testing for each block. It will take a long time to scan each block. It will take about 1.5 minutes for each 16 MB.
3. After you click the [Start] button in the window, the Recover process will be started.
4. Once the job is finished, the complete message will be shown in the middle area, or else it will show error message.

# 6

## Troubleshooting

Q : The "**U-Storage**" icon doesn't appear on the taskbar, how can I unplug my USB flash disk?

A : You can either remove the USB flash disk when the LED is blinking slowly. Or you can right click on the device icon shown in "**My Computer**". Select "**Eject**". Then you can safely remove the device.

Q : What is the function of the LED?

A : When the USB flash disk is inserted into the USB port and the LED lights up, it means that the computer has detected the device. When data transfer between computer with the device that the LED is blinking quickly.

Q : What should I do if I do not see the removable disk in Windows Explorer after I have inserted the USB flash disk?

A : First please check whether you have installed the driver onto your system, then check "**Device Manager**", whether "**USB Mass Storage Adapter**" appeared in the "**Universal Serial Bus Controller**", if it has a yellow mark, please remove it and reinstall the driver, if there's no yellow mark, please restart your computer.

Q : Can the USB flash disk be used as a boot-disk?

A : Yes. Some BIOS versions currently support USB devices as a bootable device. It is recommended to contact your BIOS vendor to check for capability. Please refer item 8.7 to know how to [make a boot-disk](#).

Q : Can I transfer data from a **Macintosh** to a PC?

A : Yes, both the **Macintosh** and PC can read information from the device. In order to use the files you are transferring, you'll need to have the relevant application program on the host computer.

Q : What kind of data can be stored on the USB flash disk?

A : You can save any type of files on the USB flash disk, no matter they are text, graphic, program, music or multimedia files.

Q : Can the USB flash disk be used under DOS environment?

A : No, because DOS does not support USB devices, so the device cannot be used under DOS environment.

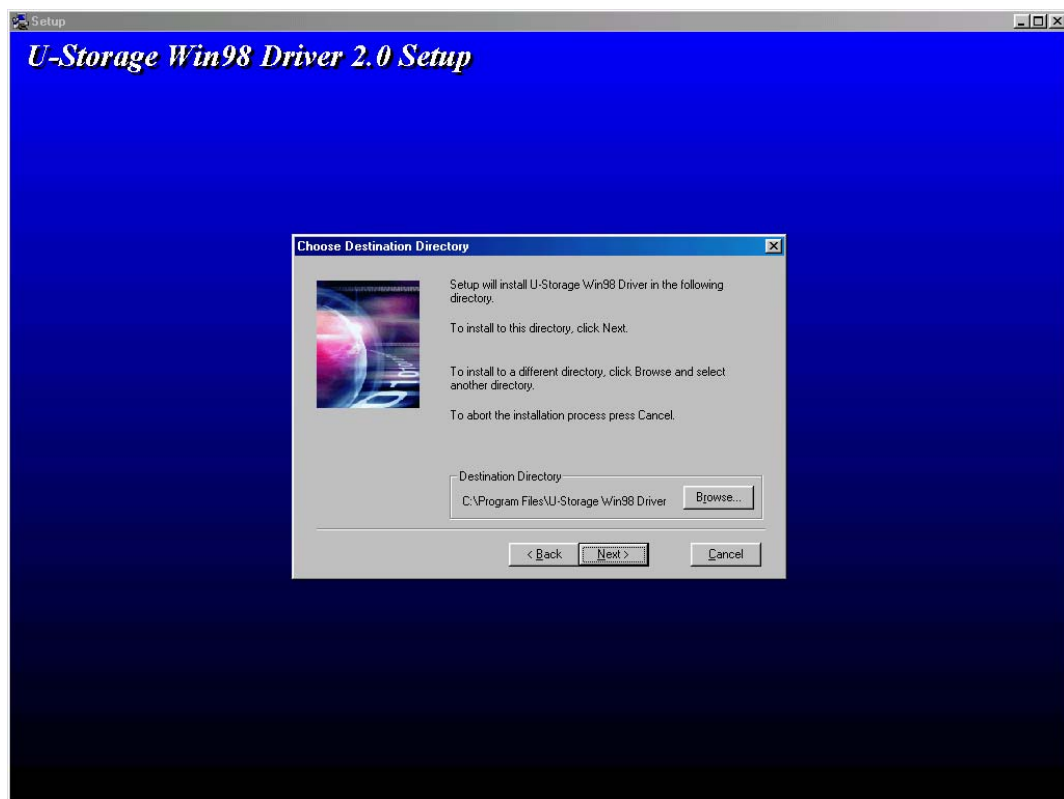


## Appendix A. Driver installation

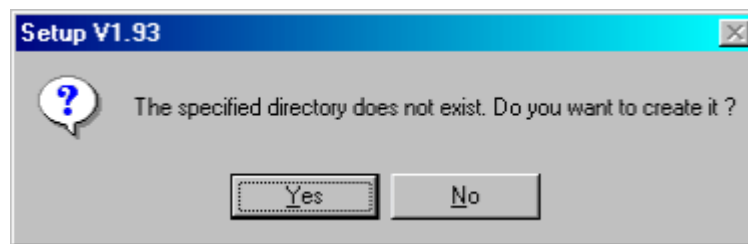
No driver required for Windows ME, Windows 2000, Windows XP, Mac OS 9.0 and above. Driver is only needed for Windows 98SE. (U-Storage software includes driver, you don't need install this driver again if you had setup U-Storage already.)

### For Windows 98SE installation

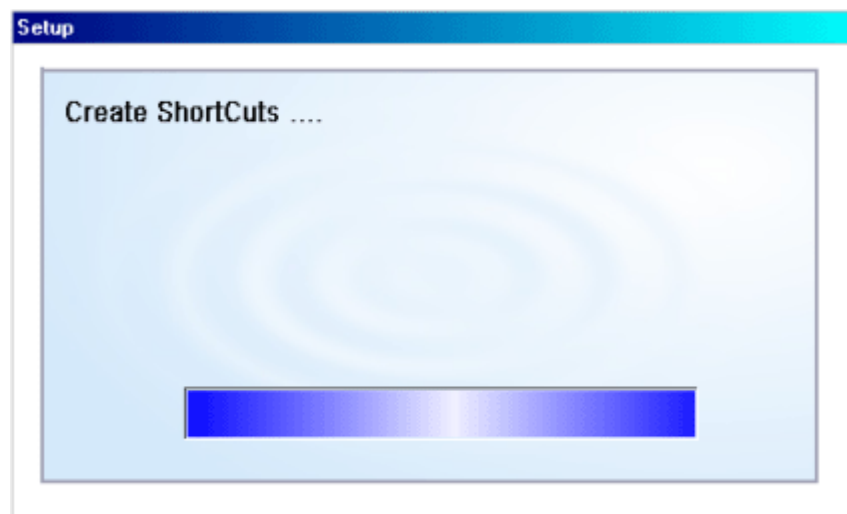
1. Insert the CD-ROM supplied.
2. Double click the **UStorageWin98Driver2.0.exe** program.
3. Follow the on-screen instructions that are displayed on the screen.
4. To install, click the "**next**" button. Follow the on-screen instructions that are displayed on the screen.



5. Click the "**Yes**" button to install the driver. Follow the instructions displayed on the screen.



6. Once set-up is completed then insert your device into USB port, using the supplied cable if required.



7. Finally, unplug and then re-plug the device.
8. Now, you can use the device on your computer.